

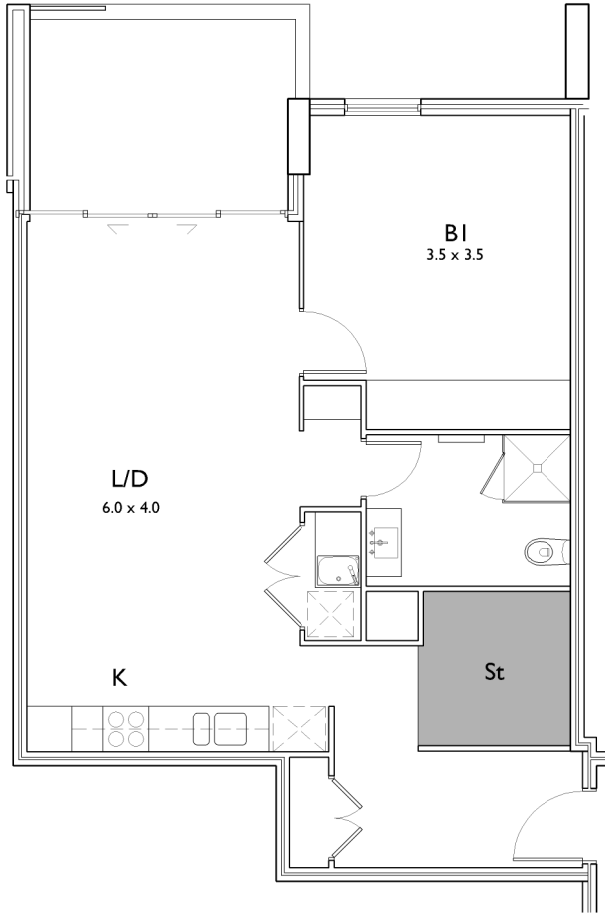
ANNEXURE 1

Architectural Drawing Set

**prepared by
ADM Architects**

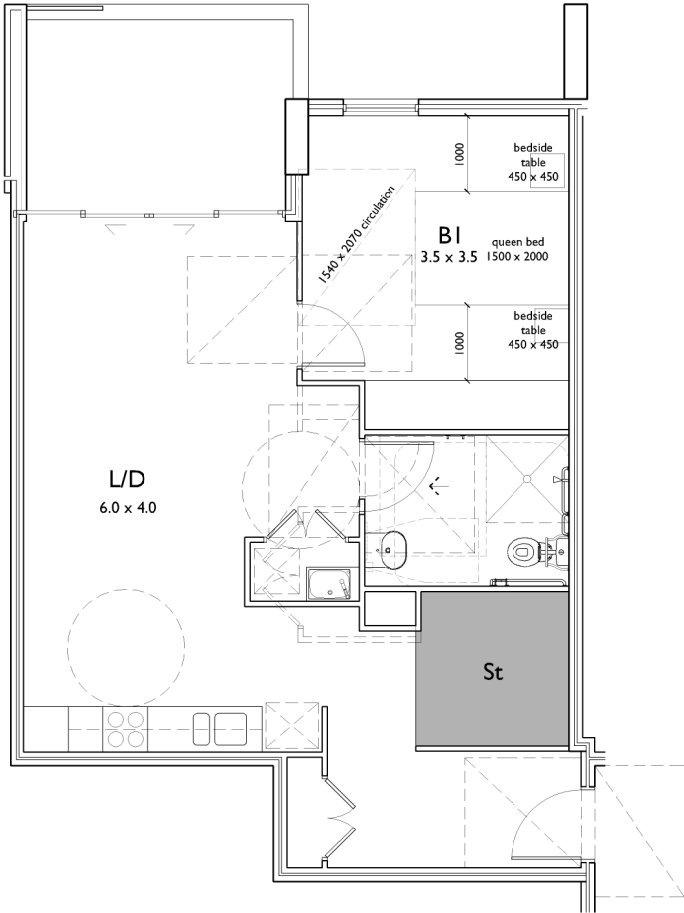
**Akuna Street, Terralong Street
and Shoalhaven Street, Kiama**

Part 1 - Drawings A-303, A-401 - A-403



PRE- ADAPTATION PLAN
UNIT E103
CLASS C ADAPTABLE UNIT TO AS 4299

*BALCONY SHOWN IS TYPICAL AND MAY VARY BETWEEN UNITS



POST- ADAPTATION PLAN
UNIT E103
REFER TO ACCESS CONSULTANTS REPORT

*BALCONY SHOWN IS TYPICAL AND MAY VARY BETWEEN UNITS

NOT FOR CONSTRUCTION

A	20.10.17	ISSUED FOR DEVELOPMENT APPLICATION	SP	ADM
ISSUE	DATE	DESCRIPTION	initials	chkd
sign		date		
These drawings are not to be scaled. Figured dimensions shall be used in all cases.				

COPYRIGHT - These drawings remain the exclusive copyright of ADM Architects. Reproductions in any form whether electronic, digital or otherwise shall not be allowed except by express permission granted in writing by ADM Architects.

FIGURED DIMENSIONS - These drawings are not to be scaled. Figured dimensions shall be used in all cases.

DISCREPANCIES IN DIMENSIONS/POSITIONS/LOCATIONS/FINISHES The Contractor is to verify any dimensional, location or finish discrepancy with ADM Architects prior to any physical construction or setting out so that ADM Architects is given the opportunity to resolve potential discrepancies or conflicts in sufficient time without causing abortive work. The Contractor shall be responsible for notifying ADM Architects of any such discrepancy or conflict that may arise on site.

COORDINATION OF WORKS - These drawings are to be read in conjunction with the full set of consultant's drawings, specifications, reports and DA conditions.

NOMINATED ARCHITECT- The nominated Architect for ADM Projects (Australia) Pty Ltd T/A: ADM Architects is Angelo Di Martino AIB No.7608



**NICOLAS
DAOUD &
CO PTY. Ltd**

Project
DEMOLITION OF EXISTING STRUCTURES AND CONSTRUCTION
OF A MIXED USE DEVELOPMENT COMPRISING RESIDENTIAL
APARTMENTS ABOVE RETAIL SHOPS, COMMERCIAL TENANCIES
AND ASSOCIATED CARPARKING AREAS

at
LOT 1, DP50193, LOT 3, DPI104857, PT.1, DP506764, LOTS 100 & 200,
DPI017091,
AKUNA & TERRALONG STREET
KIAMA

scale	1:100 @ A3		
date	OCTOBER 2017		
drawn	djm	SJ	chkd ADM
drawing	DEVELOPMENT APPLICATION		
PRE AND POST ADAPTATION PLAN 3 OF 3			
Project No.	Drawing No.		issue
2016-19(a)	A-303		A



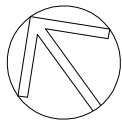
9am



12pm



3pm



SHADOW ANALYSIS WINTER SOLSTICE

ISSUE	DATE	DESCRIPTION	Initials	chkd
C	19.07.17	RE-ISSUED FOR DEVELOPMENT APPLICATION	SJ	ADM
B	25.11.16	RE-ISSUED FOR DEVELOPMENT APPLICATION	SP	ADM
A	14.11.16	ISSUED FOR DEVELOPMENT APPLICATION		

sign _____ date _____

These drawings are not to be scaled. Figured dimensions shall be used in all cases.

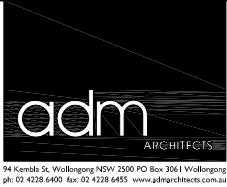
COPYRIGHT - These drawings remain the exclusive copyright of ADM Architects. Reproductions in any form whether electronic, digital or otherwise shall not be allowed except by express permission granted in writing by ADM Architects.

FIGURED DIMENSIONS - These drawings are not to be scaled. Figured dimensions shall be used in all cases.

DISCREPANCIES IN DIMENSIONS/POSITIONS/LOCATIONS/FINISHES The Contractor is to verify any dimensional, location or finish discrepancy with ADM Architects prior to any physical construction or setting out so that ADM Architects is given the opportunity to resolve potential discrepancies or conflicts in sufficient time without causing abortive work. The Contractor shall be responsible for notifying ADM Architects of any such discrepancy or conflict that may arise on site.

COORDINATION OF WORKS - These drawings are to be read in conjunction with the full set of consultant's drawings, specifications, reports and DA conditions.

NOMINATED ARCHITECT - The nominated Architect for ADM Projects (Australia) Pty Ltd T/as ADM Architects is Angelo Di Martino ARB No.7608



**NICOLAS
DAOUD &
CO PTY. Ltd**

Project
**DEMOLITION OF EXISTING STRUCTURES AND CONSTRUCTION
OF A MIXED USE DEVELOPMENT COMPRISING RESIDENTIAL
APARTMENTS ABOVE RETAIL SHOPS, COMMERCIAL TENANCIES
AND ASSOCIATED CARPARKING AREAS**
at
**LOT 1, DP50193, LOT 3, DP1104857, PT. I, DP506764, LOTS 100 & 200,
DP1017091,
AKUNA & TERRALONG STREET
KIAMA**

scale	NTS
date	JULY 2017
drawn	djm SJ chkd ADM
drawing	DEVELOPMENT APPLICATION SHADOW ANALYSIS
Project No.	2016-19(a)
Drawing No.	A-401
issue	C

NOT FOR CONSTRUCTION



9am



10am



11am



12pm



1pm



2pm



3pm

SOLAR ACCESS STUDY C.O.S EAST
WINTER SOLSTICE

A	20.10.17	ISSUED FOR DEVELOPMENT APPLICATION	SP	ADM
ISSUE	DATE	DESCRIPTION	initials	chkd
sign		date		
These drawings are not to be scaled. Figured dimensions shall be used in all cases.				

COPYRIGHT - These drawings remain the exclusive copyright of ADM Architects. Reproductions in any form whether electronic, digital or otherwise shall not be allowed except by express permission granted in writing by ADM Architects.

FIGURED DIMENSIONS - These drawings are not to be scaled. Figured dimensions shall be used in all cases.

DISCREPANCIES IN DIMENSIONS/POSITIONS/LOCATIONS/FINISHES The Contractor is to verify any dimensional, location or finish discrepancy with ADM Architects prior to any physical construction or setting out so that ADM Architects is given the opportunity to resolve potential discrepancies or conflicts in sufficient time without causing abortive work. The Contractor shall be responsible for notifying ADM Architects of any such discrepancy or conflict that may arise on site.

COORDINATION OF WORKS - These drawings are to be read in conjunction with the full set of consultant's drawings, specifications, reports and DA conditions.

NOMINATED ARCHITECT - The nominated Architect for ADM Projects (Australia) Pty Ltd T/A ADM Architects is Angelo Di Martino AIB No.7608



NICOLAS
DAOUD &
CO PTY. Ltd

Project
DEMOLITION OF EXISTING STRUCTURES AND CONSTRUCTION
OF A MIXED USE DEVELOPMENT COMPRISING RESIDENTIAL
APARTMENTS ABOVE RETAIL SHOPS, COMMERCIAL TENANCIES
AND ASSOCIATED CARPARKING AREAS
at
LOT 1, DP50193, LOT 3, DPI I04857, PT.1, DP506764, LOTS 100 & 200,
DPI017091,
AKUNA & TERRALONG STREET
KIAMA

scale	NTS		
date	OCTOBER 2017		
drawn	djm	SJ	chkd ADM
drawing	DEVELOPMENT APPLICATION		
	SOLAR ACCESS STUDY 1 of 3		
Project No.	2016-19(a)		issue
Drawing No.	A-402		A

NOT FOR CONSTRUCTION



9am



10am



11am



12pm



1pm



2pm



3pm

SOLAR ACCESS STUDY C.O.S WEST
WINTER SOLSTICE

A	20.10.17	ISSUED FOR DEVELOPMENT APPLICATION	SP	ADM
ISSUE	DATE	DESCRIPTION	initials	chkd
sign			date	
These drawings are not to be scaled. Figured dimensions shall be used in all cases.				

COPYRIGHT - These drawings remain the exclusive copyright of ADM Architects. Reproductions in any form whether electronic, digital or otherwise shall not be allowed except by express permission granted in writing by ADM Architects.

FIGURED DIMENSIONS - These drawings are not to be scaled. Figured dimensions shall be used in all cases.

DISCREPANCIES IN DIMENSIONS/POSITIONS/LOCATIONS/FINISHES The Contractor is to verify any dimensional, location or finish discrepancy with ADM Architects prior to any physical construction or setting out so that ADM Architects is given the opportunity to resolve potential discrepancies or conflicts in sufficient time without causing abortive work. The Contractor shall be responsible for notifying ADM Architects of any such discrepancy or conflict that may arise on site.

COORDINATION OF WORKS - These drawings are to be read in conjunction with the full set of consultant's drawings, specifications, reports and DA conditions.

NOMINATED ARCHITECT - The nominated Architect for ADM Projects (Australia) Pty Ltd T/A/S ADM Architects is Angelo Di Martino AIB No.7608



NICOLAS
DAOUD &
CO PTY. Ltd

Project
DEMOLITION OF EXISTING STRUCTURES AND CONSTRUCTION
OF A MIXED USE DEVELOPMENT COMPRISING RESIDENTIAL
APARTMENTS ABOVE RETAIL SHOPS, COMMERCIAL TENANCIES
AND ASSOCIATED CARPARKING AREAS

at
LOT 1, DP50193, LOT 3, DP1104857, PT.1, DP506764, LOTS 100 & 200,
DP1017091,
AKUNA & TERRALONG STREET
KIAMA

scale	NTS			
date	OCTOBER 2017			
drawn	djm	SJ	chkd	ADM
drawing	DEVELOPMENT APPLICATION			
	SOLAR ACCESS STUDY 2 of 3			
Project No.	2016-19(a)		Drawing No.	A-403
issue	A		A	

NOT FOR CONSTRUCTION